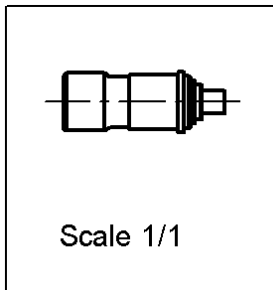
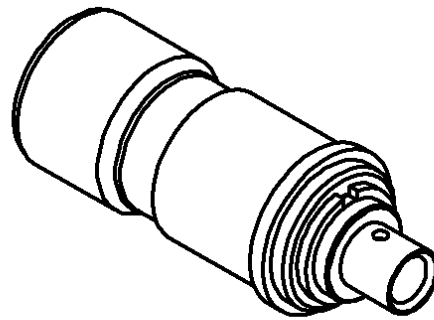
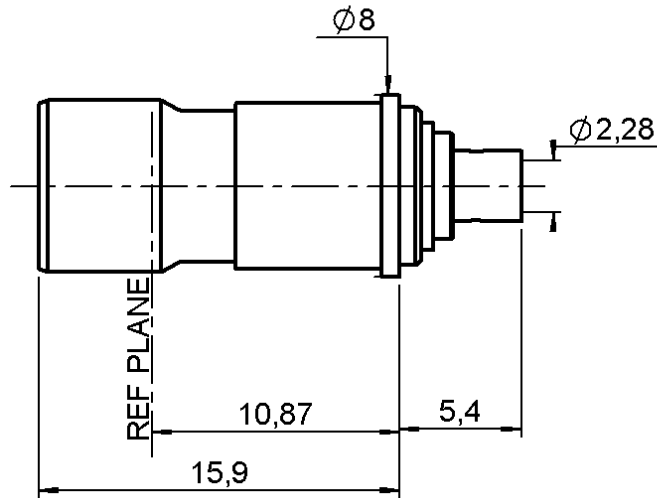


STRAIGHT FLOATING JACK SOLDER TYPE

R128.294.300

SOLDER TYPE - CABLE .085

Series : BMA



All dimensions are in mm.



COMPONENTS	MATERIALS	PLATINGS (µm)
BODY	STAINLESS STEEL	GOLD 0.2 OVER NICKEL 2
CENTER CONTACT	BERYLLIUM COPPER	GOLD 1.3 OVER NICKEL 2
OUTER CONTACT	BERYLLIUM COPPER	GOLD 1.3 OVER NICKEL 2
INSULATOR	PTFE	
GASKET	-	
OTHERS PARTS	STAINLESS STEEL	GOLD 1.3 OVER NICKEL 2
-	-	-
-	-	-

Issue : 0328 A

In the effort to improve our products, we reserve the right to make changes judged to be necessary.



STRAIGHT FLOATING JACK SOLDER TYPE

R128.294.300

SOLDER TYPE - CABLE .085

Series : **BMA**

PACKAGING

Standard	Unit	Other
1		Contact us

SPECIFICATION

CABLE ASSEMBLY

ELECTRICAL CHARACTERISTICS

Stripping	a	b	c	d	e	f
mm	1.78	0.00	0.00	0.00	0.00	0.00

Impedance		50	Ω
Frequency		0-22	GHz
VSWR	1.07 +	0.010	x F(GHz) Maxi
Insertion loss		0.03	\sqrt{F} (GHz) dB Maxi
RF leakage	- (NA	- F(GHz)) dB mini
Voltage rating		350	Veff Maxi
Dielectric withstanding voltage		1000	Veff mini
Insulation resistance		5000	M Ω mini

Assembly instruction :

Recommended cable(s)
RG 405
KS 1

Cable retention

- pull off **136** N mini
- torque **NA** N.cm

MECHANICAL CHARACTERISTICS

TOOLING

Center contact retention			
Axial force – Mating end		27	N mini
Axial force – Opposite end		27	N mini
Torque		NA	N.cm mini

Part Number	Description	Hexagon
.	.	.
R282.062.000	POINTER GAUGE	APPOINT AGE (ame cable)
R282.051.000	STRIPPING TOOL	DENUDEGE
R282.740.000	SOLDERING MOUNTING	Montage
R282.860.100	SOLDERING POSITIONER	

Recommended torque			
Mating		NA	N.cm
Panel nut		NA	N.cm
Clamp nut		NA	N.cm
A/F clamp nut		0.000	mm

Mating life		1000	Cycles mini
Weight		0.000	g

OTHERS CHARACTERISTICS

COMPATIBLE NORME : MIL C38999

ENVIRONMENTAL

Operating temperature		-65/+125	$^{\circ}$ C
Hermetic seal		NA	Atm.cm3/s
Panel leakage		NA	

Issue : 0328 A

In the effort to improve our products, we reserve the right to make changes judged to be necessary.



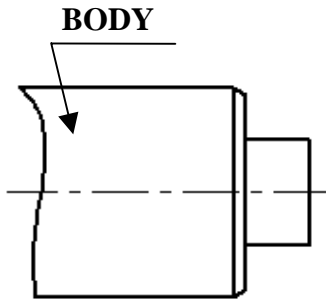
STRAIGHT FLOATING JACK SOLDER TYPE

R128.294.300

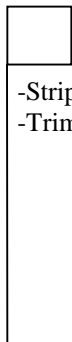
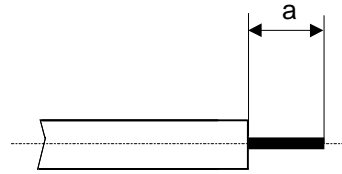
SOLDER TYPE - CABLE .085

Series : BMA

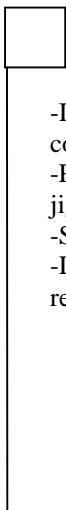
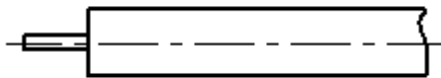
COMPONENTS



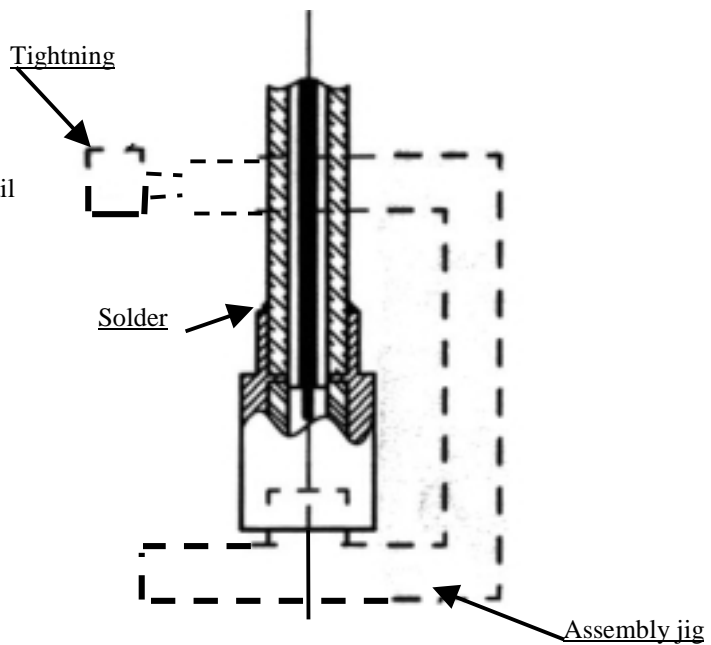
STIPPING DIMENSIONS



- Strip the cable with the cable stripping tool.
- Trim the cable inner conductor with the trimmer.



- Introduce the cable into the body until contact with the body shoulder..
- Place the sub-assembly on assembly jig
- Solder body on the cable.
- Let assembly cool down before removing it from the jig.



Issue : 0328 A

In the effort to improve our products, we reserve the right to make changes judged to be necessary.

